

# Hearing voices when no one is talking?



Seeing things others can't?



Believing in special powers or abilities?



Feeling suspicious or paranoid?



Recognizing patterns or signs that others don't?



Visit our website for more info

These experiences are symptoms of psychosis. They can be confusing and scary, but the good news is that treatment works and help is available.

Even if unsure, call our confidential referral line to receive a psychosis screening and rapid referral to treatment near you.

☎ **203-200-0140**

Calls are confidential. Screening for psychosis & referral to treatment.

Visit [mindmapct.org](http://mindmapct.org) to learn more.

☎ **203-200-0140**

Calls are confidential. Screening for psychosis & referral to treatment.

Visit [mindmapct.org](http://mindmapct.org) to learn more.

☎ **203-200-0140**

Calls are confidential. Screening for psychosis & referral to treatment.

Visit [mindmapct.org](http://mindmapct.org) to learn more.

☎ **203-200-0140**

Calls are confidential. Screening for psychosis & referral to treatment.

Visit [mindmapct.org](http://mindmapct.org) to learn more.

☎ **203-200-0140**

Calls are confidential. Screening for psychosis & referral to treatment.

Visit [mindmapct.org](http://mindmapct.org) to learn more.

☎ **203-200-0140**

Calls are confidential. Screening for psychosis & referral to treatment.

Visit [mindmapct.org](http://mindmapct.org) to learn more.

☎ **203-200-0140**

Calls are confidential. Screening for psychosis & referral to treatment.

Visit [mindmapct.org](http://mindmapct.org) to learn more.

# Are you or someone you know hearing voices?



Seeing things others can't?



Believing in special powers or abilities?



Feeling suspicious or paranoid?



Recognizing patterns or signs that others don't?

These experiences are symptoms of psychosis. Even if unsure, there are many benefits to calling as soon as possible for help. Free screening for psychosis and referral to appropriate mental health care is now available.



Visit our website for more info

📞 **203-200-0140**

Calls are confidential. Screening for psychosis & referral to treatment.

Visit [mindmapct.org](http://mindmapct.org) to learn more.

📞 **203-200-0140**

Calls are confidential. Screening for psychosis & referral to treatment.

Visit [mindmapct.org](http://mindmapct.org) to learn more.

📞 **203-200-0140**

Calls are confidential. Screening for psychosis & referral to treatment.

Visit [mindmapct.org](http://mindmapct.org) to learn more.

📞 **203-200-0140**

Calls are confidential. Screening for psychosis & referral to treatment.

Visit [mindmapct.org](http://mindmapct.org) to learn more.

📞 **203-200-0140**

Calls are confidential. Screening for psychosis & referral to treatment.

Visit [mindmapct.org](http://mindmapct.org) to learn more.

📞 **203-200-0140**

Calls are confidential. Screening for psychosis & referral to treatment.

Visit [mindmapct.org](http://mindmapct.org) to learn more.

📞 **203-200-0140**

Calls are confidential. Screening for psychosis & referral to treatment.

Visit [mindmapct.org](http://mindmapct.org) to learn more.

# Are you or someone you know hearing voices?



Seeing things others can't?



Believing in special powers or abilities?



Feeling suspicious or paranoid?



Recognizing patterns or signs that others don't?

These experiences are symptoms of psychosis. They can be confusing and scary, but the good news is that treatment works and help is available.

Call our confidential number to receive a psychosis screening and rapid referral to care.



Visit our website for more info

📞 **203-200-0140**

Calls are confidential. Screening for psychosis & referral to treatment.

Visit [mindmapct.org](http://mindmapct.org) to learn more.

📞 **203-200-0140**

Calls are confidential. Screening for psychosis & referral to treatment.

Visit [mindmapct.org](http://mindmapct.org) to learn more.

📞 **203-200-0140**

Calls are confidential. Screening for psychosis & referral to treatment.

Visit [mindmapct.org](http://mindmapct.org) to learn more.

📞 **203-200-0140**

Calls are confidential. Screening for psychosis & referral to treatment.

Visit [mindmapct.org](http://mindmapct.org) to learn more.

📞 **203-200-0140**

Calls are confidential. Screening for psychosis & referral to treatment.

Visit [mindmapct.org](http://mindmapct.org) to learn more.

📞 **203-200-0140**

Calls are confidential. Screening for psychosis & referral to treatment.

Visit [mindmapct.org](http://mindmapct.org) to learn more.

📞 **203-200-0140**

Calls are confidential. Screening for psychosis & referral to treatment.

Visit [mindmapct.org](http://mindmapct.org) to learn more.

# Paranoid others are out to get you?



Seeing things others can't?



Believing in special powers or abilities?



Recognizing patterns or signs that others don't?



No longer wanting to socialize or be around others?

These experiences are symptoms of psychosis. They can be confusing and scary, but the good news is that treatment works and help is available.

Call our confidential number to receive a psychosis screening and rapid referral to care.



Visit our website for more info

📞 **203-200-0140**

Calls are confidential. Screening for psychosis & referral to treatment.

Visit [mindmapct.org](http://mindmapct.org) to learn more.

📞 **203-200-0140**

Calls are confidential. Screening for psychosis & referral to treatment.

Visit [mindmapct.org](http://mindmapct.org) to learn more.

📞 **203-200-0140**

Calls are confidential. Screening for psychosis & referral to treatment.

Visit [mindmapct.org](http://mindmapct.org) to learn more.

📞 **203-200-0140**

Calls are confidential. Screening for psychosis & referral to treatment.

Visit [mindmapct.org](http://mindmapct.org) to learn more.

📞 **203-200-0140**

Calls are confidential. Screening for psychosis & referral to treatment.

Visit [mindmapct.org](http://mindmapct.org) to learn more.

📞 **203-200-0140**

Calls are confidential. Screening for psychosis & referral to treatment.

Visit [mindmapct.org](http://mindmapct.org) to learn more.

📞 **203-200-0140**

Calls are confidential. Screening for psychosis & referral to treatment.

Visit [mindmapct.org](http://mindmapct.org) to learn more.

# Are you or a loved one feeling paranoid?



Seeing things others can't?



Believing in special powers or abilities?



Feeling suspicious or paranoid?



No longer wanting to socialize or be around others?



Visit our website for more info

These experiences are symptoms of psychosis. They can be confusing and scary, but the good news is that treatment works and help is available.

Even if unsure, call our confidential referral line to receive a psychosis screening and rapid referral to treatment near you.

📞 **203-200-0140**

Calls are confidential. Screening for psychosis & referral to treatment.

Visit [mindmapct.org](http://mindmapct.org) to learn more.

📞 **203-200-0140**

Calls are confidential. Screening for psychosis & referral to treatment.

Visit [mindmapct.org](http://mindmapct.org) to learn more.

📞 **203-200-0140**

Calls are confidential. Screening for psychosis & referral to treatment.

Visit [mindmapct.org](http://mindmapct.org) to learn more.

📞 **203-200-0140**

Calls are confidential. Screening for psychosis & referral to treatment.

Visit [mindmapct.org](http://mindmapct.org) to learn more.

📞 **203-200-0140**

Calls are confidential. Screening for psychosis & referral to treatment.

Visit [mindmapct.org](http://mindmapct.org) to learn more.

📞 **203-200-0140**

Calls are confidential. Screening for psychosis & referral to treatment.

Visit [mindmapct.org](http://mindmapct.org) to learn more.

📞 **203-200-0140**

Calls are confidential. Screening for psychosis & referral to treatment.

Visit [mindmapct.org](http://mindmapct.org) to learn more.

# Do you notice these symptoms in a loved one?



Seeing things others can't?



Believing in special powers or abilities?



Feeling suspicious or paranoid?



No longer wanting to socialize or be around others?

These experiences are symptoms of psychosis. Even if unsure, there are many benefits to calling as soon as possible for help. Free screening for psychosis and referral to appropriate mental health care is now available.



Visit our website for more info

📞 **203-200-0140**

Calls are confidential. Screening for psychosis & referral to treatment.

Visit [mindmapct.org](http://mindmapct.org) to learn more.

📞 **203-200-0140**

Calls are confidential. Screening for psychosis & referral to treatment.

Visit [mindmapct.org](http://mindmapct.org) to learn more.

📞 **203-200-0140**

Calls are confidential. Screening for psychosis & referral to treatment.

Visit [mindmapct.org](http://mindmapct.org) to learn more.

📞 **203-200-0140**

Calls are confidential. Screening for psychosis & referral to treatment.

Visit [mindmapct.org](http://mindmapct.org) to learn more.

📞 **203-200-0140**

Calls are confidential. Screening for psychosis & referral to treatment.

Visit [mindmapct.org](http://mindmapct.org) to learn more.

📞 **203-200-0140**

Calls are confidential. Screening for psychosis & referral to treatment.

Visit [mindmapct.org](http://mindmapct.org) to learn more.

📞 **203-200-0140**

Calls are confidential. Screening for psychosis & referral to treatment.

Visit [mindmapct.org](http://mindmapct.org) to learn more.

# Do odd behaviors mean something more?



Seeing things others can't?



Believing in special powers or abilities?



Feeling suspicious or paranoid?



No longer wanting to socialize or be around others?



Visit our website for more info

These experiences are symptoms of psychosis. They can be confusing and scary, but the good news is that treatment works and help is available.

Even if unsure, call our confidential referral line to receive a psychosis screening and rapid referral to treatment near you.

📞 **203-200-0140**

Calls are confidential. Screening for psychosis & referral to treatment.

Visit [mindmapct.org](http://mindmapct.org) to learn more.

📞 **203-200-0140**

Calls are confidential. Screening for psychosis & referral to treatment.

Visit [mindmapct.org](http://mindmapct.org) to learn more.

📞 **203-200-0140**

Calls are confidential. Screening for psychosis & referral to treatment.

Visit [mindmapct.org](http://mindmapct.org) to learn more.

📞 **203-200-0140**

Calls are confidential. Screening for psychosis & referral to treatment.

Visit [mindmapct.org](http://mindmapct.org) to learn more.

📞 **203-200-0140**

Calls are confidential. Screening for psychosis & referral to treatment.

Visit [mindmapct.org](http://mindmapct.org) to learn more.

📞 **203-200-0140**

Calls are confidential. Screening for psychosis & referral to treatment.

Visit [mindmapct.org](http://mindmapct.org) to learn more.

📞 **203-200-0140**

Calls are confidential. Screening for psychosis & referral to treatment.

Visit [mindmapct.org](http://mindmapct.org) to learn more.

# Do odd behaviors mean something more?



Hearing or seeing things others can't



Believing in special powers or abilities?



Feeling suspicious or paranoid?



Recognizing patterns or signs that others don't?

These experiences are symptoms of psychosis. Even if unsure, there are many benefits to calling as soon as possible for help. Free screening for psychosis and referral to appropriate mental health care is now available.



Visit our website for more info

📞 **203-200-0140**

Calls are confidential. Screening for psychosis & referral to treatment.

Visit [mindmapct.org](http://mindmapct.org) to learn more.

📞 **203-200-0140**

Calls are confidential. Screening for psychosis & referral to treatment.

Visit [mindmapct.org](http://mindmapct.org) to learn more.

📞 **203-200-0140**

Calls are confidential. Screening for psychosis & referral to treatment.

Visit [mindmapct.org](http://mindmapct.org) to learn more.

📞 **203-200-0140**

Calls are confidential. Screening for psychosis & referral to treatment.

Visit [mindmapct.org](http://mindmapct.org) to learn more.

📞 **203-200-0140**

Calls are confidential. Screening for psychosis & referral to treatment.

Visit [mindmapct.org](http://mindmapct.org) to learn more.

📞 **203-200-0140**

Calls are confidential. Screening for psychosis & referral to treatment.

Visit [mindmapct.org](http://mindmapct.org) to learn more.

📞 **203-200-0140**

Calls are confidential. Screening for psychosis & referral to treatment.

Visit [mindmapct.org](http://mindmapct.org) to learn more.



# Feel like your mind is playing tricks on you?



Hearing or seeing things others can't



Believing in special powers or abilities?



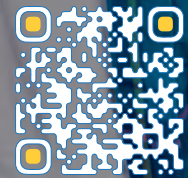
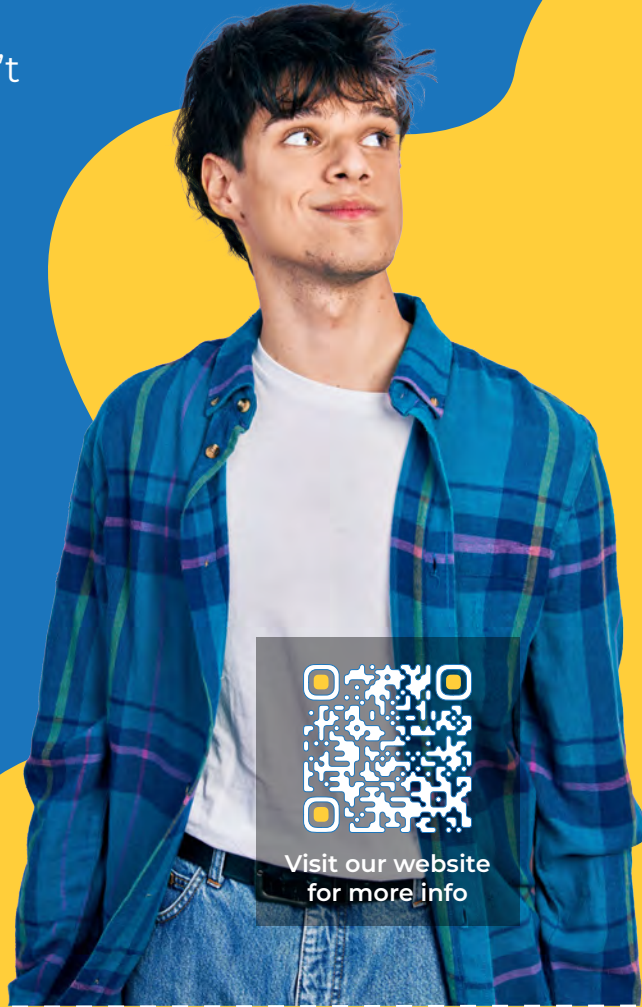
Feeling suspicious or paranoid?



Recognizing patterns or signs that others don't?

These experiences are symptoms of psychosis. They can be confusing and scary, but the good news is that treatment works and help is available.

Call our confidential number to receive a psychosis screening and rapid referral to care.



Visit our website for more info

📞 **203-200-0140**

Calls are confidential. Screening for psychosis & referral to treatment.

Visit [mindmapct.org](http://mindmapct.org) to learn more.

📞 **203-200-0140**

Calls are confidential. Screening for psychosis & referral to treatment.

Visit [mindmapct.org](http://mindmapct.org) to learn more.

📞 **203-200-0140**

Calls are confidential. Screening for psychosis & referral to treatment.

Visit [mindmapct.org](http://mindmapct.org) to learn more.

📞 **203-200-0140**

Calls are confidential. Screening for psychosis & referral to treatment.

Visit [mindmapct.org](http://mindmapct.org) to learn more.

📞 **203-200-0140**

Calls are confidential. Screening for psychosis & referral to treatment.

Visit [mindmapct.org](http://mindmapct.org) to learn more.

📞 **203-200-0140**

Calls are confidential. Screening for psychosis & referral to treatment.

Visit [mindmapct.org](http://mindmapct.org) to learn more.

📞 **203-200-0140**

Calls are confidential. Screening for psychosis & referral to treatment.

Visit [mindmapct.org](http://mindmapct.org) to learn more.

# Feel like your mind is playing tricks on you?



Hearing or seeing things others can't



Believing in special powers or abilities?



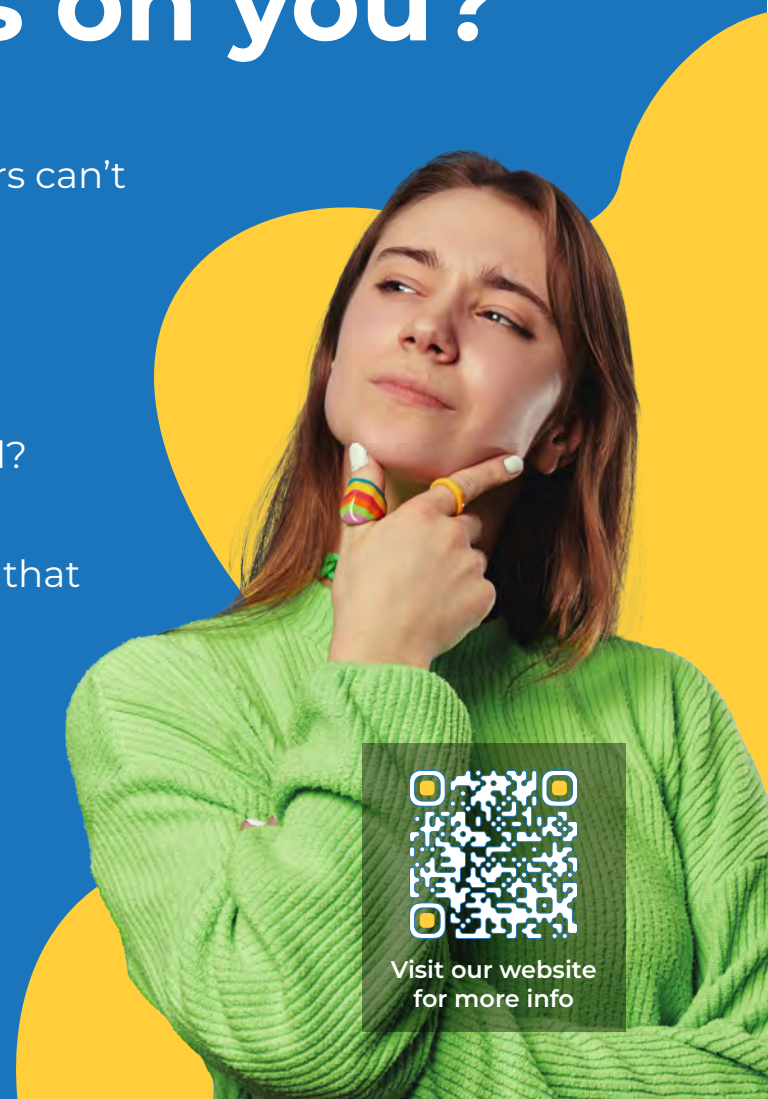
Feeling suspicious or paranoid?



Recognizing patterns or signs that others don't?

These experiences are symptoms of psychosis. They can be confusing and scary, but the good news is that treatment works and help is available.

Call our confidential number to receive a psychosis screening and rapid referral to care.



Visit our website for more info

📞 **203-200-0140**

Calls are confidential. Screening for psychosis & referral to treatment.

Visit [mindmapct.org](http://mindmapct.org) to learn more.

📞 **203-200-0140**

Calls are confidential. Screening for psychosis & referral to treatment.

Visit [mindmapct.org](http://mindmapct.org) to learn more.

📞 **203-200-0140**

Calls are confidential. Screening for psychosis & referral to treatment.

Visit [mindmapct.org](http://mindmapct.org) to learn more.

📞 **203-200-0140**

Calls are confidential. Screening for psychosis & referral to treatment.

Visit [mindmapct.org](http://mindmapct.org) to learn more.

📞 **203-200-0140**

Calls are confidential. Screening for psychosis & referral to treatment.

Visit [mindmapct.org](http://mindmapct.org) to learn more.

📞 **203-200-0140**

Calls are confidential. Screening for psychosis & referral to treatment.

Visit [mindmapct.org](http://mindmapct.org) to learn more.

📞 **203-200-0140**

Calls are confidential. Screening for psychosis & referral to treatment.

Visit [mindmapct.org](http://mindmapct.org) to learn more.

# Does someone you know claim to have special powers?



Hearing or seeing things others can't



Believing in special powers or abilities?



Feeling suspicious or paranoid?



Recognizing patterns or signs that others don't?

These experiences are symptoms of psychosis. Even if unsure, there are many benefits to calling as soon as possible for help. Free screening for psychosis and referral to appropriate mental health care is now available.



Visit our website for more info

📞 **203-200-0140**

Calls are confidential. Screening for psychosis & referral to treatment.

Visit [mindmapct.org](http://mindmapct.org) to learn more.

📞 **203-200-0140**

Calls are confidential. Screening for psychosis & referral to treatment.

Visit [mindmapct.org](http://mindmapct.org) to learn more.

📞 **203-200-0140**

Calls are confidential. Screening for psychosis & referral to treatment.

Visit [mindmapct.org](http://mindmapct.org) to learn more.

📞 **203-200-0140**

Calls are confidential. Screening for psychosis & referral to treatment.

Visit [mindmapct.org](http://mindmapct.org) to learn more.

📞 **203-200-0140**

Calls are confidential. Screening for psychosis & referral to treatment.

Visit [mindmapct.org](http://mindmapct.org) to learn more.

📞 **203-200-0140**

Calls are confidential. Screening for psychosis & referral to treatment.

Visit [mindmapct.org](http://mindmapct.org) to learn more.

📞 **203-200-0140**

Calls are confidential. Screening for psychosis & referral to treatment.

Visit [mindmapct.org](http://mindmapct.org) to learn more.

# Feel like your mind is playing tricks on you?



Hearing or seeing things others can't



Believing in special powers or abilities?



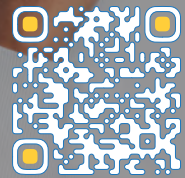
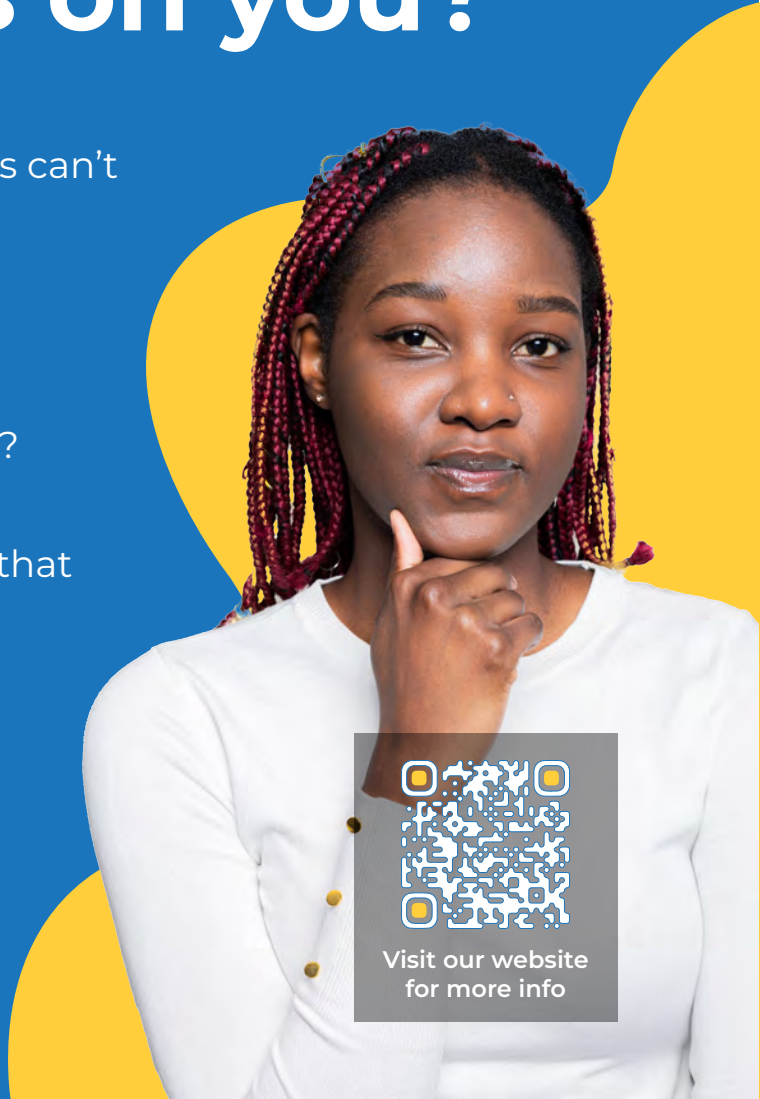
Feeling suspicious or paranoid?



Recognizing patterns or signs that others don't?

These experiences are symptoms of psychosis. They can be confusing and scary, but the good news is that treatment works and help is available.

Call our confidential number to receive a psychosis screening and rapid referral to care.



Visit our website for more info

📞 **203-200-0140**

Calls are confidential. Screening for psychosis & referral to treatment.

Visit [mindmapct.org](http://mindmapct.org) to learn more.

📞 **203-200-0140**

Calls are confidential. Screening for psychosis & referral to treatment.

Visit [mindmapct.org](http://mindmapct.org) to learn more.

📞 **203-200-0140**

Calls are confidential. Screening for psychosis & referral to treatment.

Visit [mindmapct.org](http://mindmapct.org) to learn more.

📞 **203-200-0140**

Calls are confidential. Screening for psychosis & referral to treatment.

Visit [mindmapct.org](http://mindmapct.org) to learn more.

📞 **203-200-0140**

Calls are confidential. Screening for psychosis & referral to treatment.

Visit [mindmapct.org](http://mindmapct.org) to learn more.

📞 **203-200-0140**

Calls are confidential. Screening for psychosis & referral to treatment.

Visit [mindmapct.org](http://mindmapct.org) to learn more.

📞 **203-200-0140**

Calls are confidential. Screening for psychosis & referral to treatment.

Visit [mindmapct.org](http://mindmapct.org) to learn more.